



LIST OF BEDROOMS & FLOOR PLANS AT CHARBORNE MANOR

BEDROOMS – sleeps 16 in 8 bedrooms

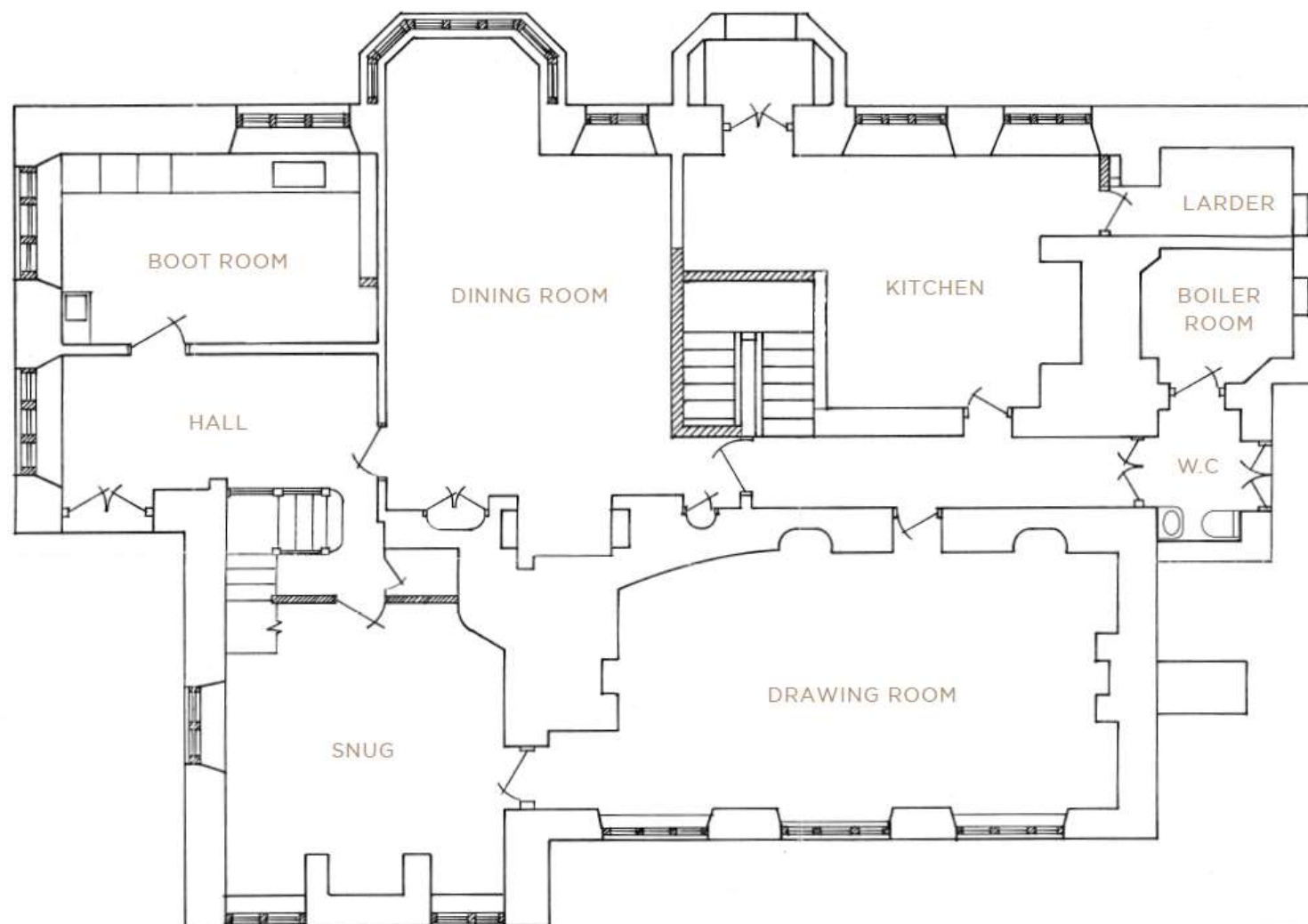
● indicates a choice of bed configuration

Bedroom	Beds	Sleeps	Features
Bedroom 1 Mapperton (First floor)	King size bed	2	Dressing room and bathroom (accessed through dressing room) with bath and overhead shower.
Bedroom 2 Stickland (First floor)	King size bed	2	Two shared family bathrooms on the first floor, one with bath and overhead shower; one with bath plus separate walk-in shower.
Bedroom 3 East Morden (First floor)	Super king size bed (can be divided into two single beds) ●	2	Two shared family bathrooms on the first floor, one with bath and overhead shower; one with bath plus separate walk-in shower.
Bedroom 4 West Morden (First floor)	King size bed	2	Two shared family bathrooms on the first floor, one with bath and overhead shower; one with bath plus separate walk-in shower.
Bedroom 5 Shapwick (First floor)	King size bed	2	Two shared family bathrooms on the first floor, one with bath and overhead shower; one with bath plus separate walk-in shower.
Bedroom 6 Bloxworth (Second floor)	Super king size bed (can be divided into two single beds) ●	2	Shared family bathroom on the second floor with bath plus separate walk-in shower.
Bedroom 7 Tomson (Second floor)	Super king size bed (can be divided into two single beds) ●	2	Shared family bathroom on the second floor with bath plus separate walk-in shower.
Bedroom 8 Muston (Second floor)	Super king size bed (can be divided into two single beds) ●	2	Shared family bathroom on the second floor with bath plus separate walk-in shower.
Total		16	

The separate three-bedroomed cottage is available for an additional charge. There is one ground floor double-bedded bedroom and two first floor double-bedded bedrooms (one with in-room roll top bath and sink). There is a separate family bathroom with bath and shower on the first floor.

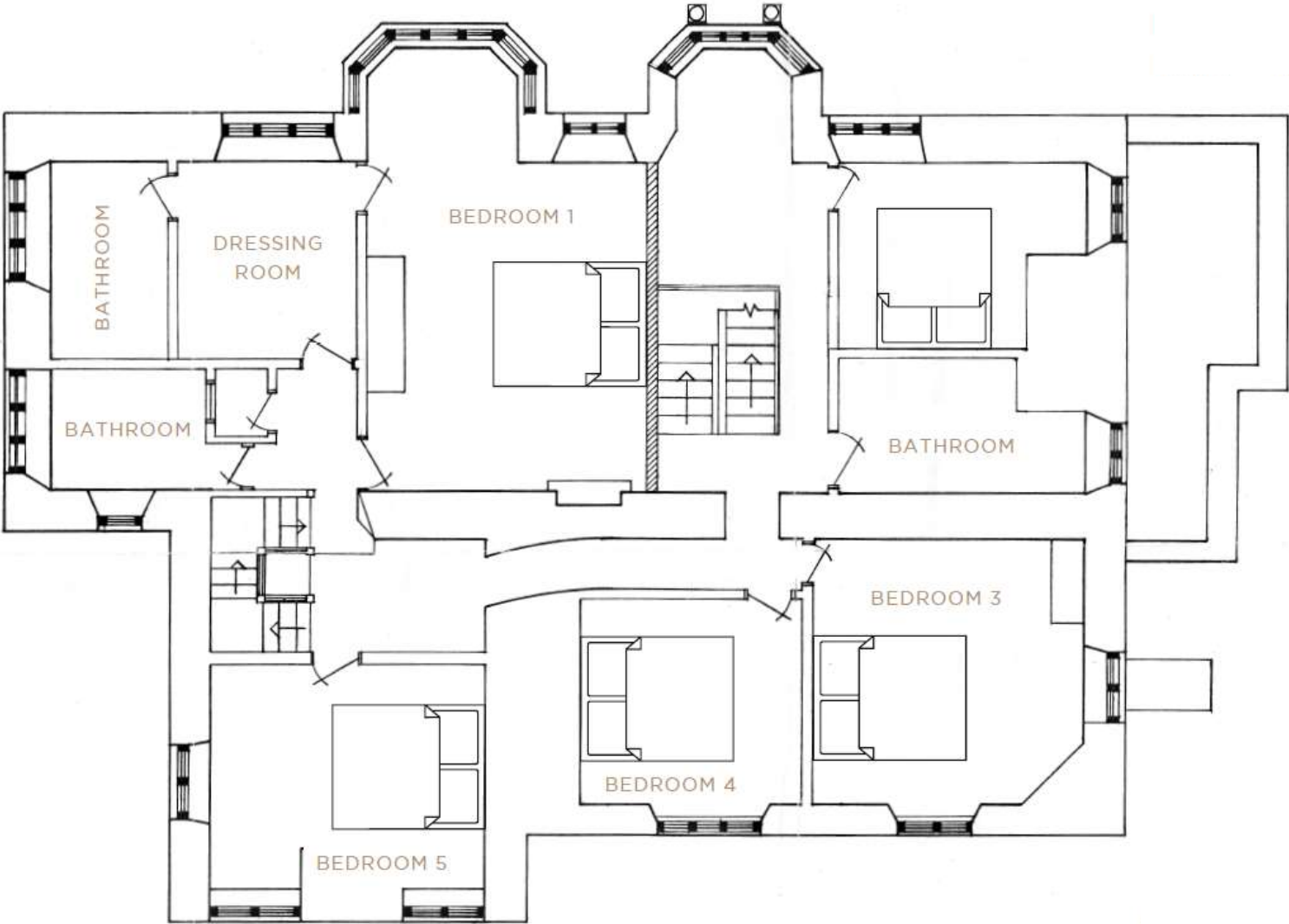


GROUND FLOOR PLAN

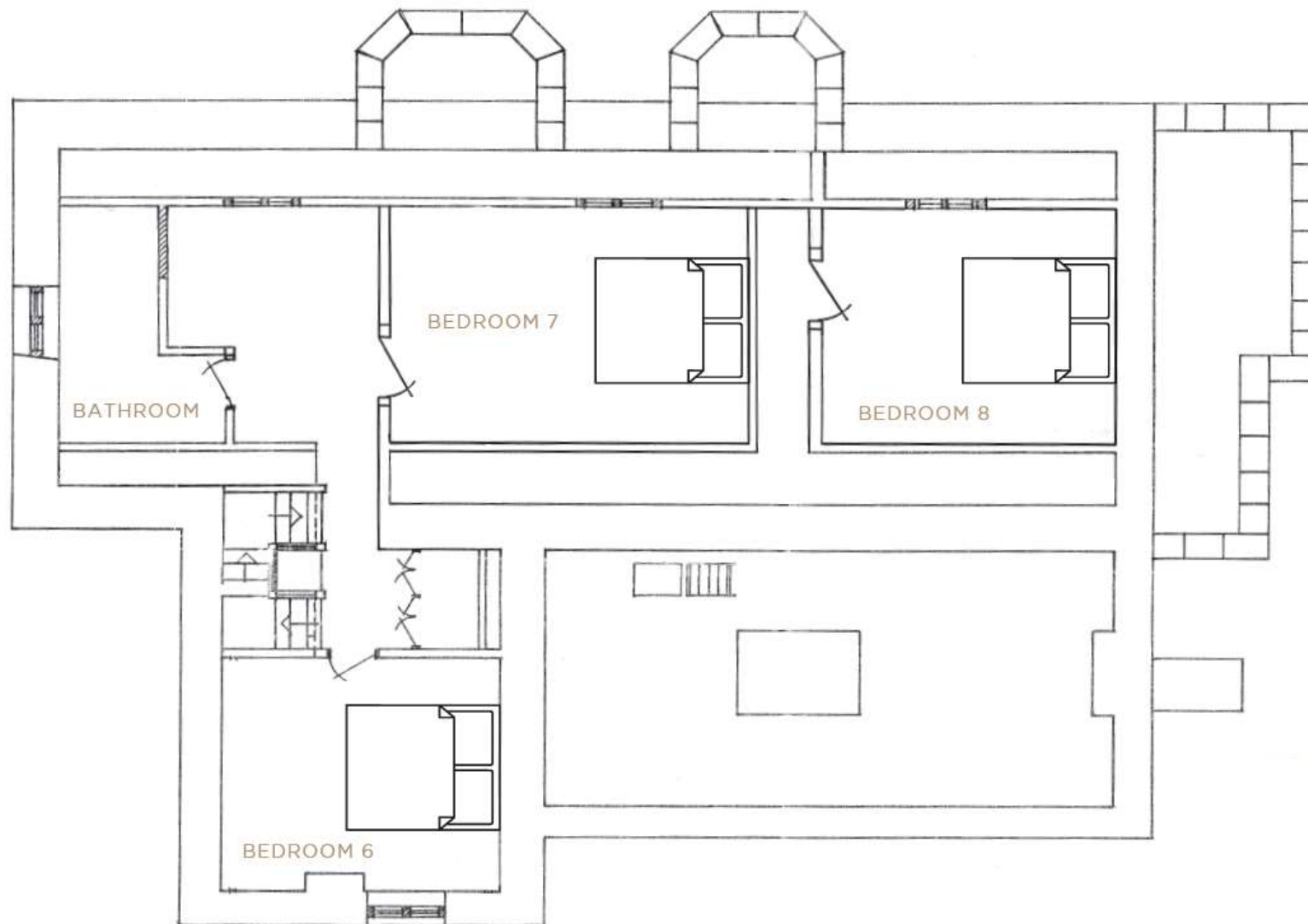


BIG HOUSE EXPERIENCE

FIRST FLOOR PLAN



SECOND FLOOR PLAN



BIG HOUSE EXPERIENCE