



BEDROOMS & FLOOR PLANS AT MYNACH HOUSE

The Barn acts as the central hub of the Estate with facilities for entertainment and special occasion events. The unique central Atrium with its vast windows, vaulted ceilings and modern décor creates a warm atmosphere, making it the perfect space to dine up to 50, host a celebration or convert into your private cinema.

The Barn is divided into 3 spacious, open plan wings: Cambrian, Pumlumon and Barcud, which can be separate or interconnected and sleep up to 38. The characterful and cosy renovated Farmhouse sleeps an additional 12.

The Barn

- Barcud (sleeps 5)
- Cambrian (sleeps 17)
- Pumlumon (sleeps 16)

The Farmhouse

- Farmhouse (sleeps 12)

Total: 50

Here's a list of all available bedrooms:

- indicates a choice of bed configuration

THE BARN: BARCUD – sleeps 5 in 2 bedrooms

Bedroom	Beds	Sleeps	Features
Barcud Coch (Ground floor)	1 super king size bed (can be split into two single beds ●)	2	Shared family wet room with Grohe shower on the ground floor. Private access directly onto the Welsh slate patio. Smart TV and Netflix. Wheelchair accessible with ramp.
Barcud Gwyn (Ground floor)	1 single bed and sturdy custom-built bunk beds	3	Shared family wet room with Grohe shower on the ground floor. Floor to ceiling windows with lovely views. Smart TV and Netflix.
Total		5	



THE BARN: CAMBRIAN – sleeps 17 in 4 bedrooms

Bedroom	Beds	Sleeps	Features
Rheidol Suite (Ground floor)	1 super king size bed (can be split into two single beds ●)	2	Disabled friendly, with direct access out to the Welsh slate patio. Smart TV. En suite wet room.
Rhos Suite (Ground floor)	1 super king size bed and bunk beds	4	En suite wet room.
Village Suite (First floor)	1 super king size bed (can be split into two single beds ●) and 3 single beds	5	Seating area, Smart TV. En suite wet room with twin showers and sinks.
Penlan Suite (First floor)	1 super king size bed (can be split into two single beds ●) and 4 single beds	6	Seating area, Smart TV. En suite wet room with twin showers and sinks.
Total		17	

There is also a separate bathroom with corner bath and mixer shower.

THE BARN: PUMLUMON – sleeps 16 in 4 bedrooms

Bedroom	Beds	Sleeps	Features
Cariad Suite (First floor)	Deluxe suite with 1 super king size bed	2	Cariad (Welsh for love) is a unique, romantic suite, perfect for popping the question or celebrating each other. Seating area, separate dressing room, Smart TV and private Juliet balcony with stunning views. En suite wet room.
Heather Suite (First floor)	1 double bed (can be split into two single beds ●) and 3 single beds	5	Seating area, Smart TV and sky light above the double bed. En suite wet room.
Vista Suite (First floor)	2 super king size beds (one can be split into two single beds ●), the other with custom over single bed	5	Seating area, Smart TV. En suite wet room.
Isaf Suite (Ground floor)	1 super king size bed (can be split into two single beds ●) and 2 single beds	4	Seating area, Smart TV. En suite wet room.
Total		16	



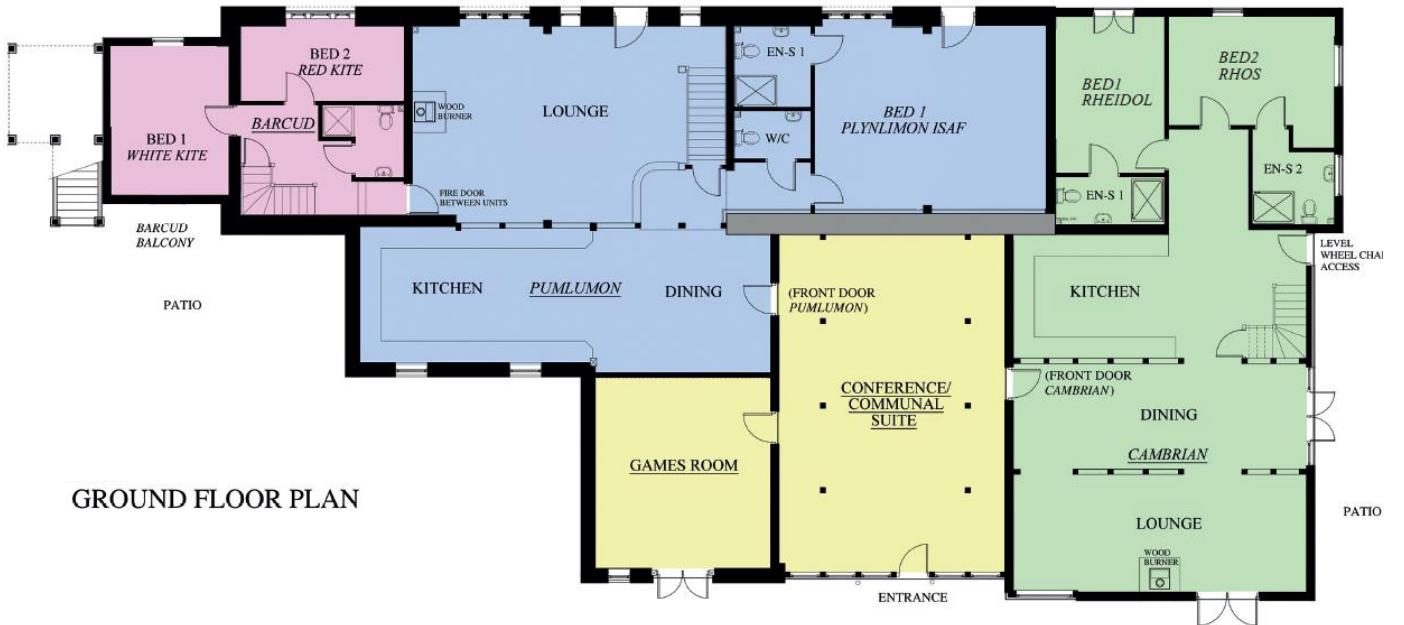
THE FARMHOUSE – sleeps 12 in 5 bedrooms

Bedroom	Beds	Sleeps	Features
Bedroom 1 (Ground floor)	1 super king size bed (can be split into two single beds ●)	2	French door leading to level path around the house. Wheelchair accessible with ramp. Accessible en suite wet room.
Bedroom 2 (First floor)	1 super king size bed (can be split into two single beds ●) and 1 single bed	3	Use of one of two shared family bathrooms (one on ground floor and one on first floor).
Bedroom 3 (First floor)	2 single beds (can be joined to make a super king size bed ●)	2	Use of one of two shared family bathrooms (one on ground floor and one on first floor).
Bedroom 4 (First floor)	1 super king size bed (can be split into two single beds ●)	2	Use of one of two shared family bathrooms (one on ground floor and one on first floor).
Bedroom 5 (First floor)	1 super king size bed (can be split into two single beds ●) and 1 single bed	3	En suite shower, toilet and wash basin.
Total		12	



FLOOR PLAN – THE BARN

- = Barcud
- = Pulumon
- = Cambrian
- = Communal



GROUND FLOOR PLAN



FIRST FLOOR PLAN



FLOOR PLAN - THE FARMHOUSE

