



LIST OF BEDROOMS & FLOOR PLANS AT LONGSLADE HALL

BEDROOMS – sleeps 18 (+6) in 8 bedrooms

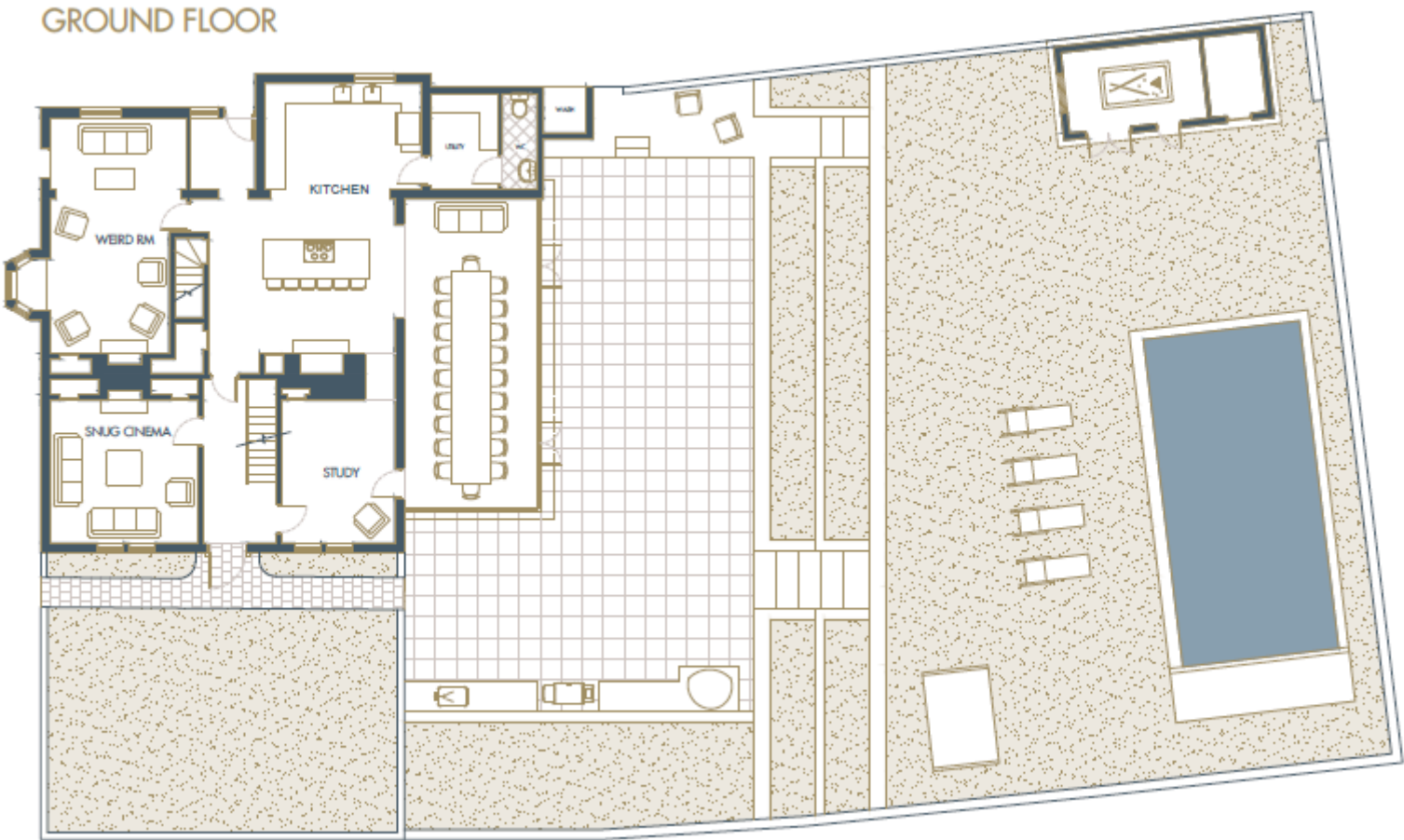
● indicates a choice of bed configuration

Bedroom	Beds	Sleeps	Features
Bedroom 1 (First floor)	King size bed (can be divided into two single beds) ● plus 1 extra bed (additional charge)	2 (+1)	En-suite shower room.
Bedroom 2 (First floor)	King size bed (can be divided into two single beds) ●	2	En-suite shower room.
Bedroom 3 (First floor)	Super king size bed (can be divided into two single beds) ● plus 2 extra beds (additional charge)	2 (+2)	En-suite shower room. Wall-mounted TV.
Bedroom 4 (First floor)	2 x bunk beds (suitable for adults)	4	En-suite shower room.
Bedroom 5 (Second floor)	King size bed (can be divided into two single beds) ● plus 1 extra bed (additional charge)	2 (+1)	En-suite shower room.
Bedroom 6 (Second floor)	Super king size bed (can be divided into two single beds) ●	2	En-suite shower room.
Bedroom 7 (Second floor)	Super king size bed (can be divided into two single beds) ● plus 1 extra bed (additional charge)	2 (+1)	En-suite shower room. Wall-mounted TV.
Bedroom 8 (Second floor)	King size bed (can be divided into two single beds) ● plus 1 extra bed (additional charge)	2 (+1)	En-suite shower room.
Total		18 (+6)	

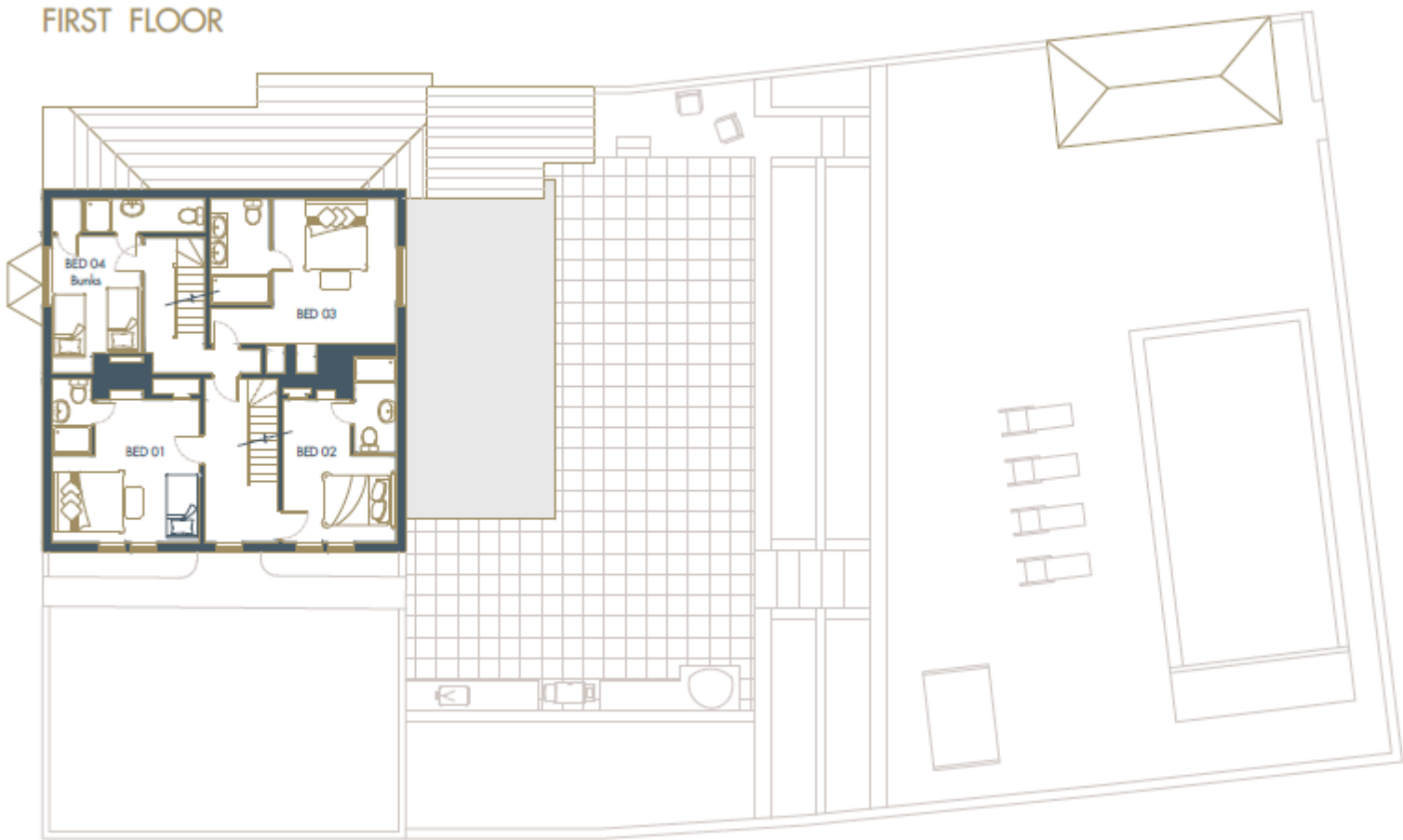
There are 6 extra beds that can be set up in bedrooms 1, 3, 5, 7 & 8 for an additional charge of £245 per bed for a 3 or 4-night stay, or £395 for a 7-night stay.



GROUND FLOOR PLAN



FIRST FLOOR PLAN



SECOND FLOOR PLAN

