



## BEDROOMS AND LAYOUT OF THE GEORGIAN LAKEHOUSE, CUMBRIA

The Georgian Lakehouse made up a house and lodge, together sleeping 22 guests.  
The house sleeps 16 (in 8 bedrooms) and the lodge sleeps 6 (in 3 bedrooms)

Lying in the heart of the Lake District with windows overlooking the garden, the marina and on to the beautiful Derwent Water, and featuring a games room.

Here's a list of all available bedrooms across both spaces:

### THE MAIN HOUSE – sleeps 16 in 8 bedrooms

- indicates a choice of bed configuration

Bedroom	Beds	Sleeps	Features
Bedroom 1 (First Floor)	Twin	2	En suite with shower
Bedroom 2 (First Floor)	Twin	2	En suite with shower
Bedroom 3 (First Floor)	King Double	2	En suite with shower
Bedroom 4 (First Floor)	King Double	2	En suite with shower
Bedroom 5 (Ground Floor)	King Double	2	En suite wet room
Catbells Suite (First Floor)	King Double	2	En suite with bath
Keswick Suite (First Floor)	King Double	2	En suite with bath
Skiddaw Suite (First Floor)	King Double	2	En suite with bath
<b>Total</b>		<b>16</b>	



## THE LODGE – sleeps 6 in 3 bedrooms

---

- indicates a choice of bed configuration

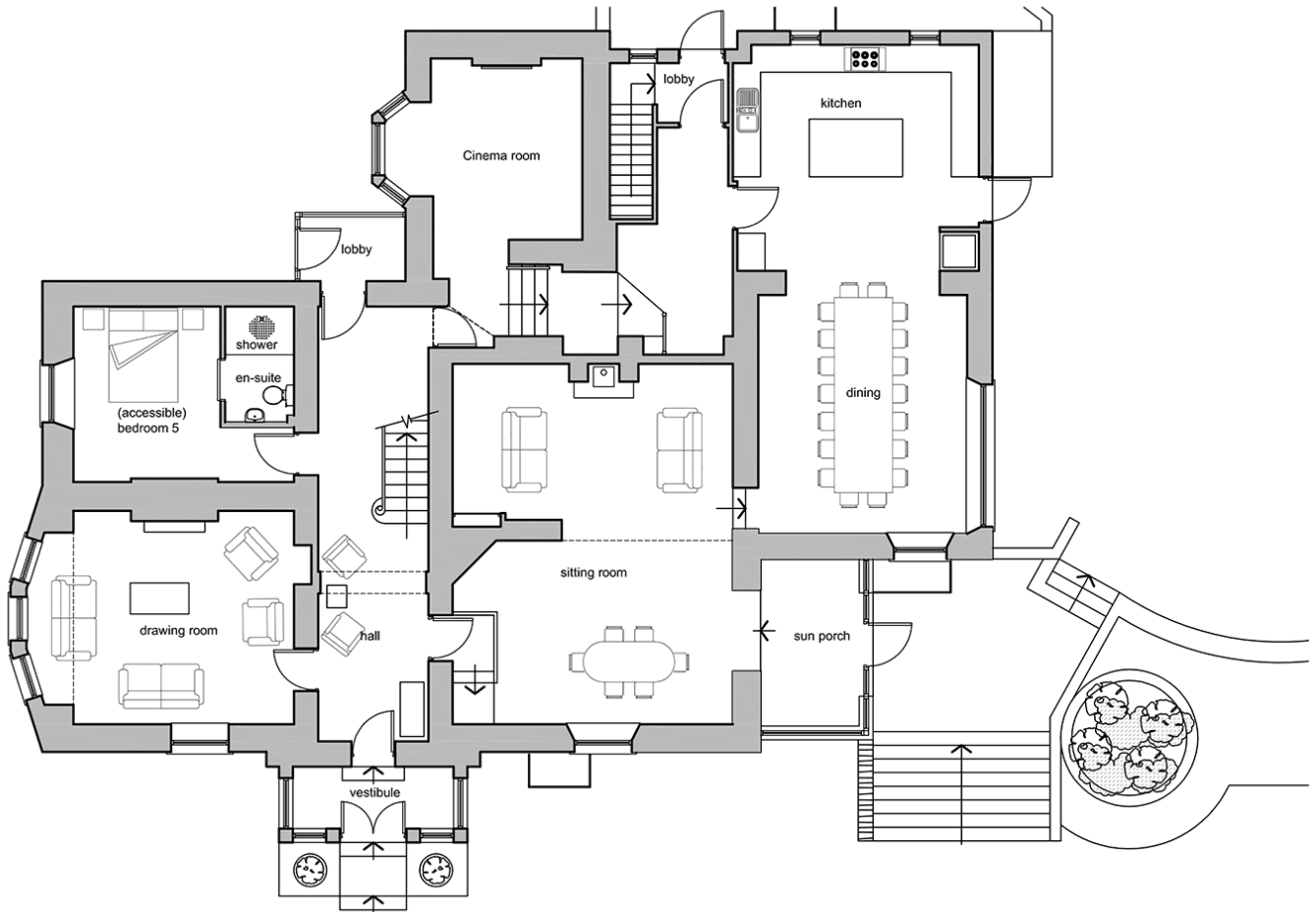
Bedroom	Beds	Sleeps	Features
Bedroom Suite 1 (Ground Floor)	King Double	2	Shared Bathroom with Bath
Bedroom 2 (Ground Floor)	Double	2	Shared Bathroom with Bath
Bedroom 3 (First Floor)	King Double	2	En suite with shower
<b>Total</b>		<b>6</b>	

### Overall capacity:

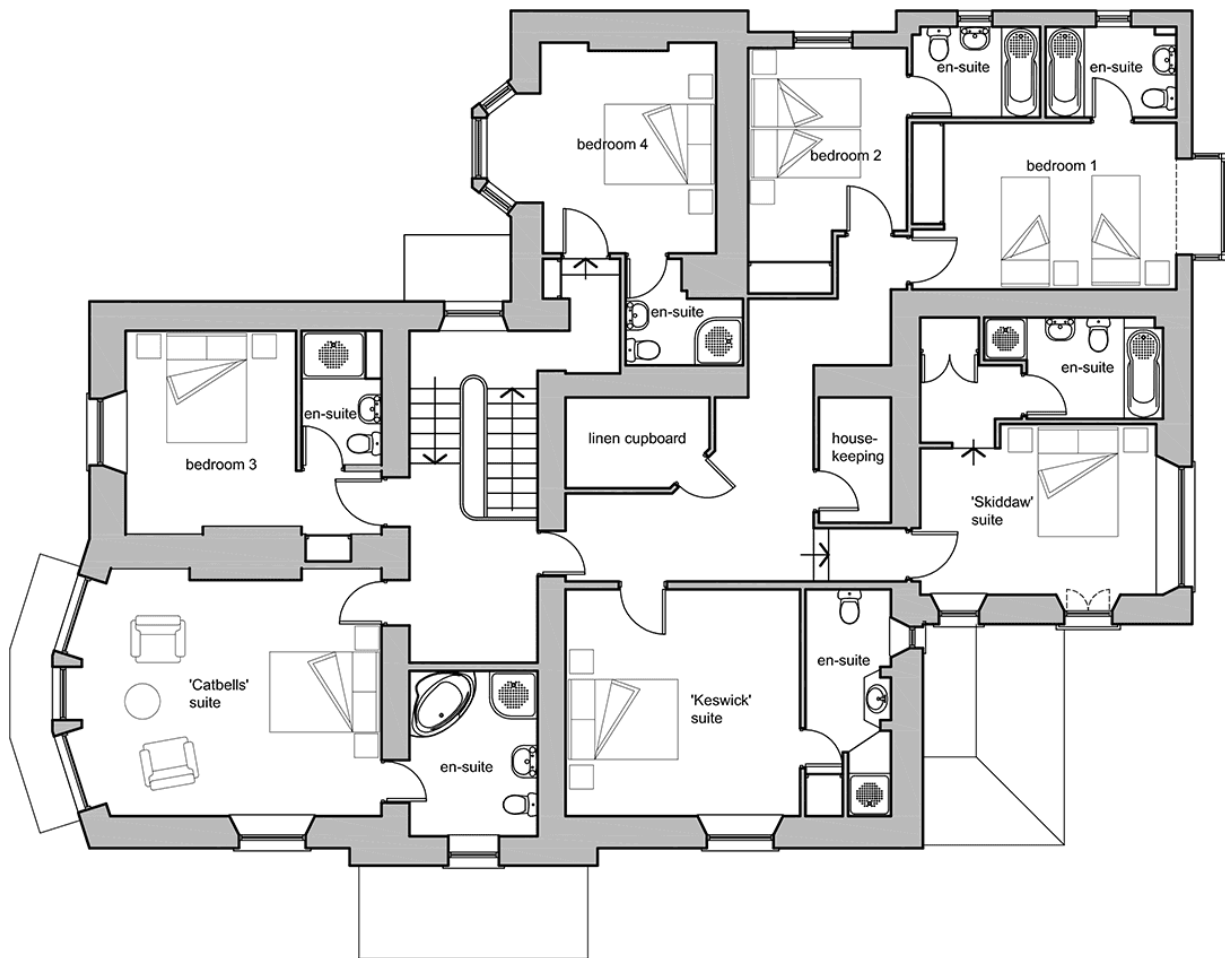
- Sleeps 22 with Main House and the Lodge
- Bedroom 5 suitable for guests with mobility restrictions
- Up to two well behaved dogs welcome, sleeping in the downstairs utility area



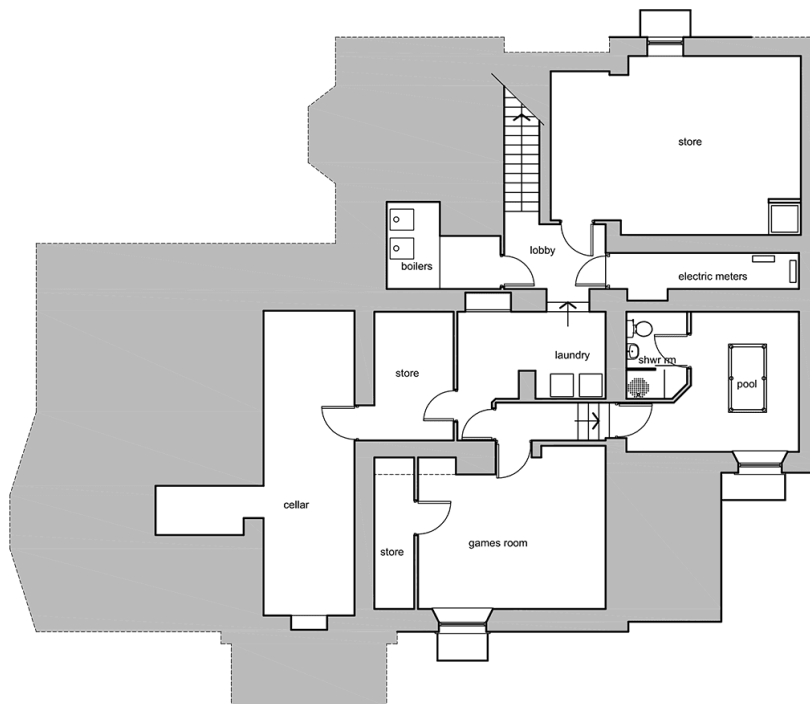
## THE HOUSE - GROUND FLOOR PLAN



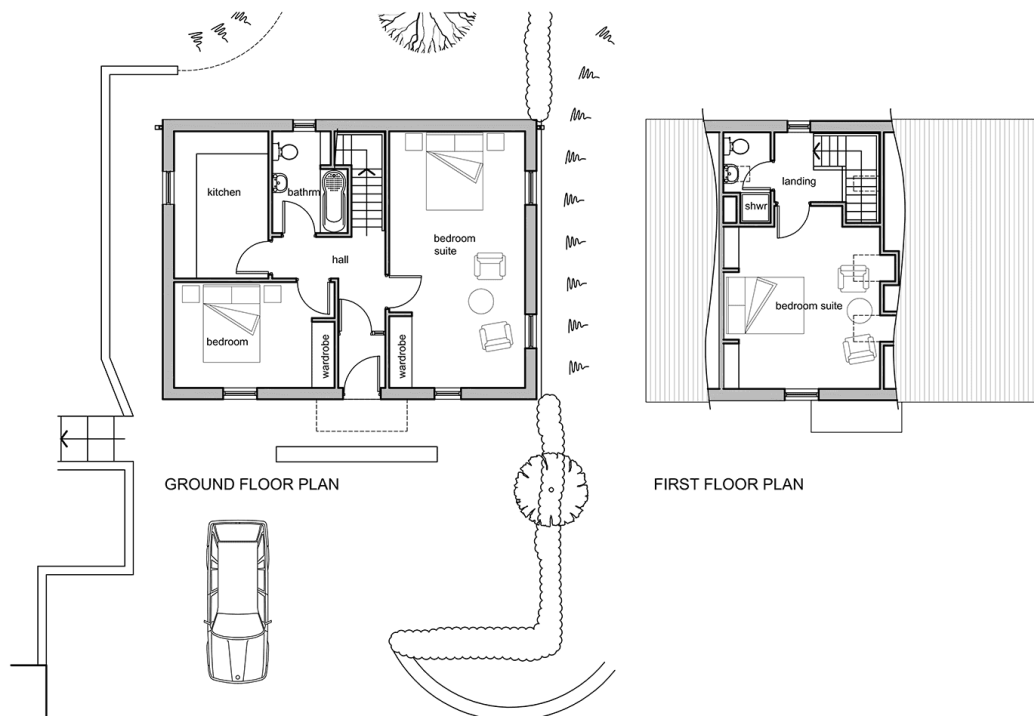
## THE HOUSE - FIRST FLOOR PLAN



## THE HOUSE - BASEMENT PLAN



## THE LODGE - FLOOR PLAN



BIG HOUSE EXPERIENCE