



LIST OF BEDROOMS & FLOOR PLANS AT CHURCHSIDE MANOR

BEDROOMS – sleeps 14 in 7 bedrooms

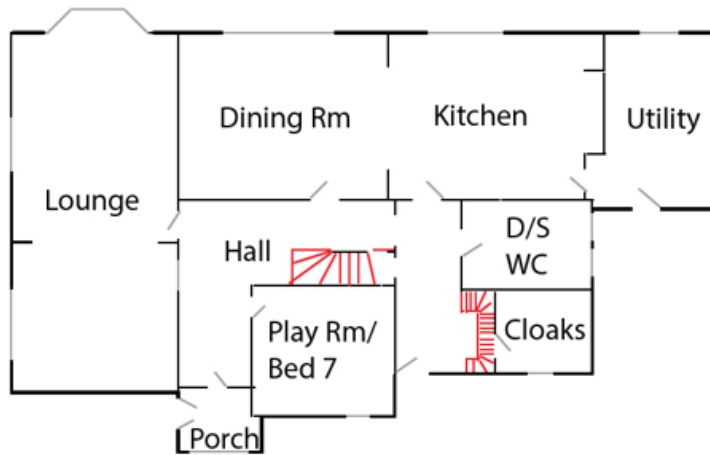
● indicates a choice of bed configuration

Bedroom	Beds	Sleeps	Features
Bedroom 1	Super king size bed (can be divided into two single beds) ●	2	Ensuite with a bath.
Bedroom 2	Super king size bed (can be divided into two single beds) ●	2	Shared bathroom.
Bedroom 3	Super king size bed (can be divided into two single beds) ●	2	Ensuite with a bath.
Bedroom 4	King size bed	2	Ensuite shower room.
Bedroom 5	Double bed	2	Ensuite shower room.
Bedroom 6	King size bed	2	Shared bathroom.
Bedroom 7 (Playroom)	Double Hypnos sofa bed	2	Separate bathroom with shower.
Total		14	

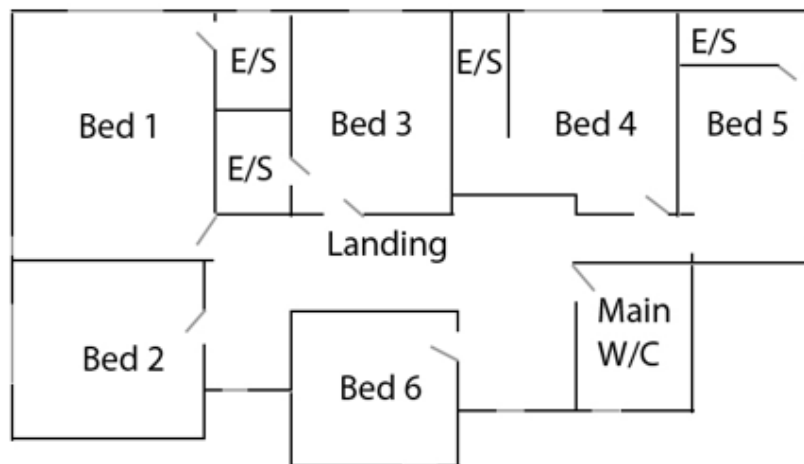
There is an extra z-bed available for no additional cost (suitable for children up to 12 years old only).



FLOOR PLANS - GROUND FLOOR



FLOOR PLANS - FIRST FLOOR



FLOOR PLANS - SECOND FLOOR

