



## LIST OF BEDROOMS & FLOOR PLANS AT BLISSFIELD HOUSE

BEDROOMS – sleeps 20 in 10 bedrooms (6 in the main house and 4 in the cottage)

● indicates a choice of bed configuration

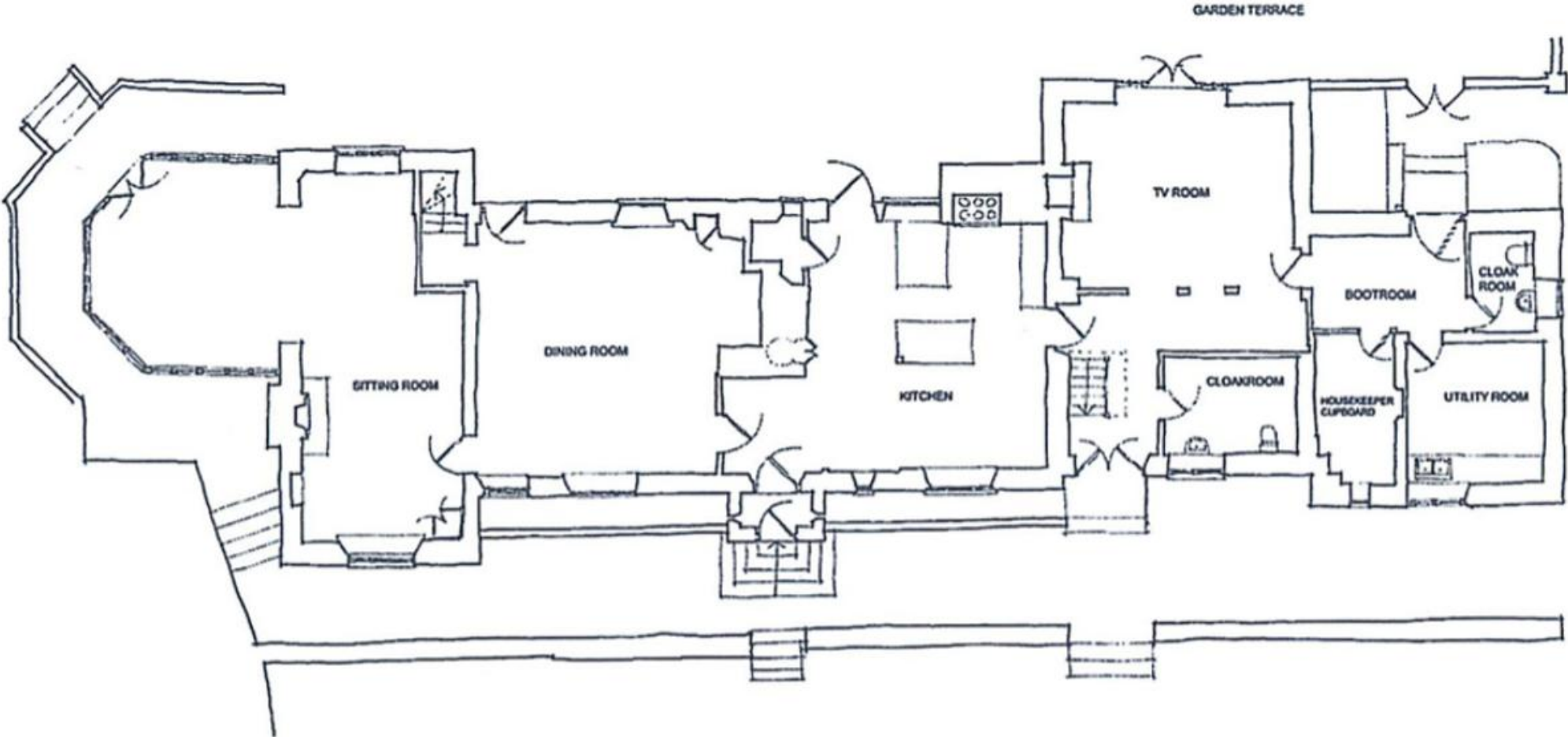
Bedroom	Beds	Sleeps	Features
<b>Main House</b>			
Bedroom 1 (First floor)	King-size bed	2	Ensuite bathroom.
Bedroom 2 (First floor)	Four poster bed	2	Roll top bath and separate WC.
Bedroom 3 (First floor)	King-size bed (can be divided into two single beds) ●	2	Ensuite bathroom with roll top bath.
Bedroom 4 (First floor)	King-size bed	2	Ensuite shower room.
Bedroom 5 (First floor)	Twin beds	2	Shared adjacent shower room with bedroom 6.
Bedroom 6 (First floor)	King-size bed (can be divided into two single beds) ●	2	Shared adjacent shower room with bedroom 5.
<b>Cottage</b>			
Bedroom 1 (First floor)	King-size bed	2	Ensuite bathroom.
Bedroom 2 (First floor)	Twin beds	2	Ensuite bathroom.
Bedroom 3 (First floor)	King-size bed (can be divided into two single beds) ●	2	Ensuite bathroom.
Bedroom 4 (First floor)	King-size bed	2	Ensuite bathroom.
<b>Total</b>		<b>20</b>	

There is also a ground floor shower room in the cottage.

**Please note, the total occupancy must be no more than 20 guests, including any infants.**

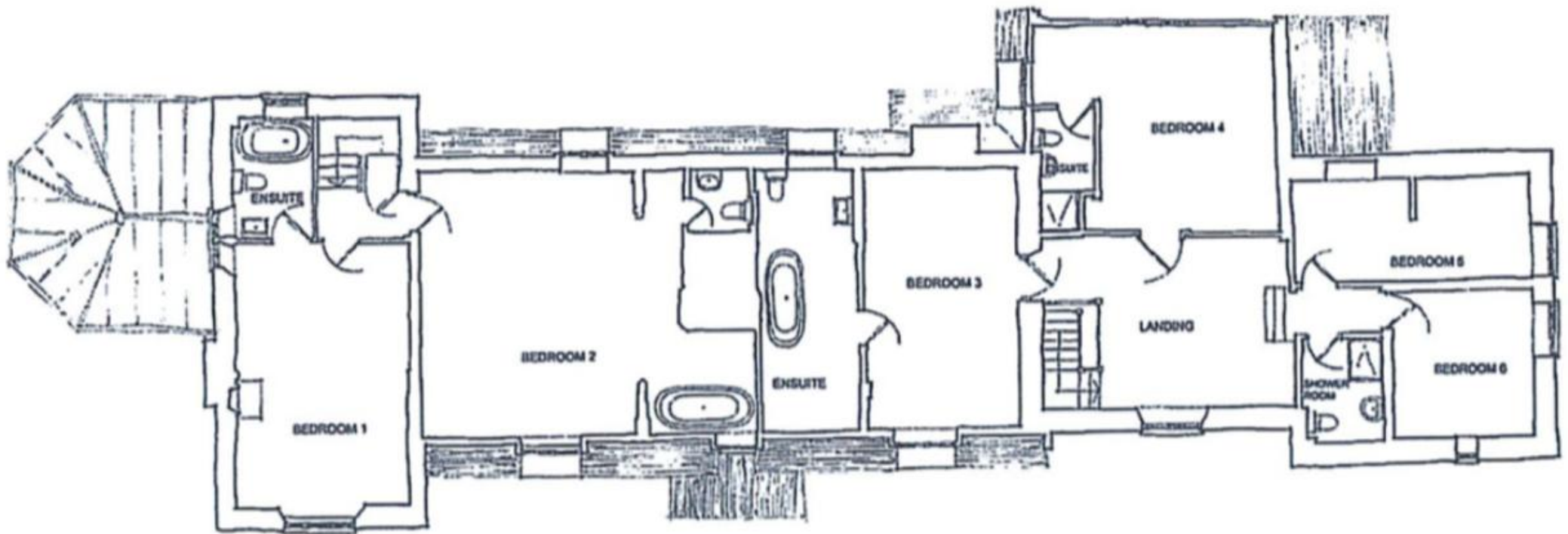


FLOOR PLANS – MAIN HOUSE (GROUND FLOOR)



# FLOOR PLANS – MAIN HOUSE (FIRST FLOOR)

---



FLOOR PLANS – COTTAGE (GROUND FLOOR)

---



FLOOR PLANS – COTTAGE (FIRST FLOOR)

---

