



LIST OF BEDROOMS & FLOOR PLANS AT HEATH HOUSE

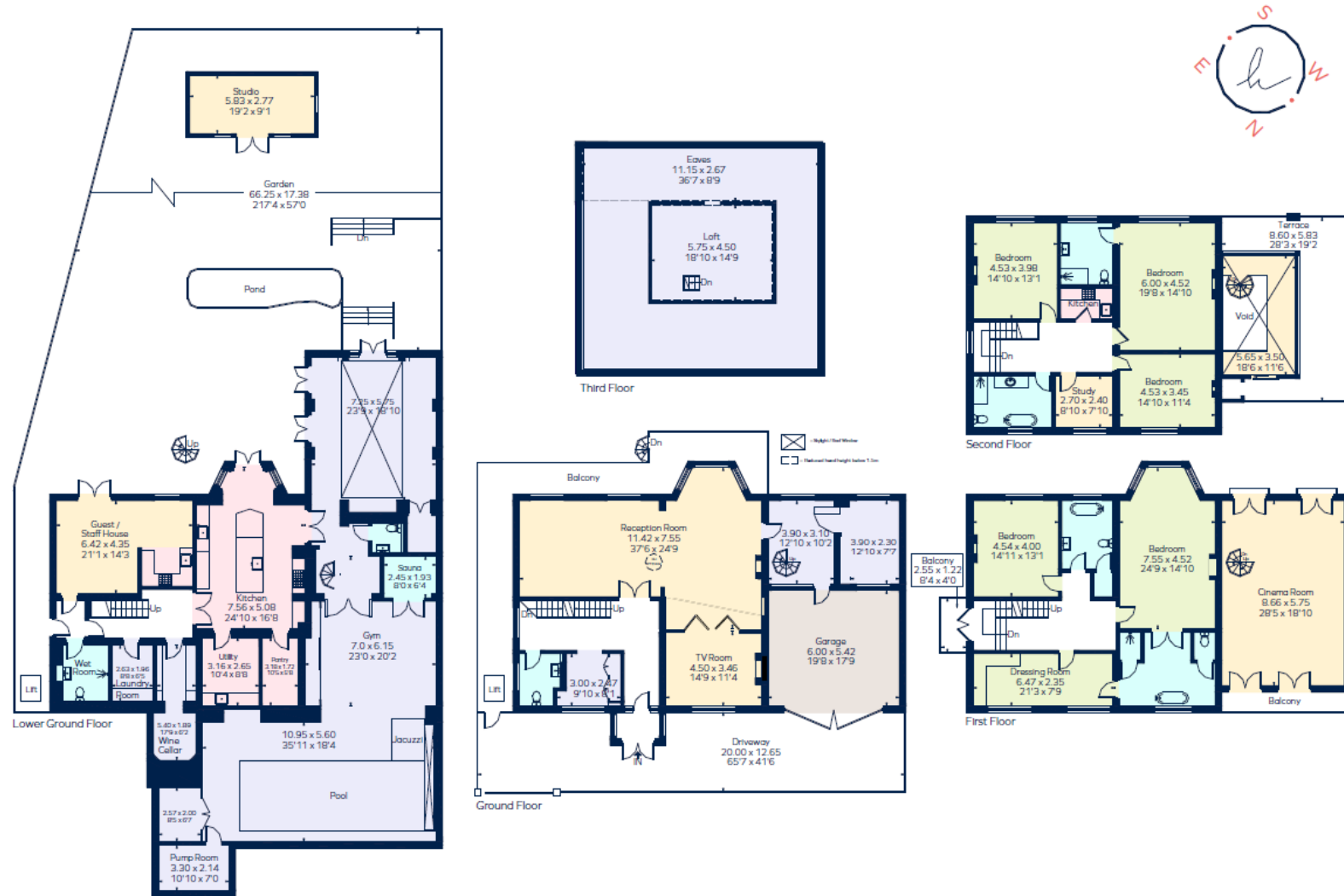
BEDROOMS – sleeps 12 (+ 2 babies/toddlers) in 6 bedrooms

Bedroom	Beds	Sleeps	Features
Master Bedroom 1 (first floor)	Super king-size bed	2	En-suite bathroom with twin sinks, Japanese toilet, shower room and free-standing oval bathtub.
Bedroom 2 (first floor)	King-size bed	2	Free-standing copper bathtub, Neptune sink cabinet, Burlington high cistern toilet. Period tiled floors.
Bedroom 3 (second floor)	King-size bed	2	Ensuite shower cubicle, toilet and sink.
Bedroom 4 (second floor)	King-size bed	2	Shared bathroom (shared with bedroom 5) with free-standing bathtub, shower cubicle, sink and toilet.
Bedroom 5 (second floor)	Double bed	2	Shared bathroom (shared with bedroom 4) with free-standing bathtub, shower cubicle, sink and toilet.
Bedroom 6 (garden floor)	Sofa bed	2	Self-contained studio/bedroom (shown as guest/staff house on floor plans below). En-suite with shower cubicle, toilet and sink. Mandarin Stone walls.
Total		12 (+2)*	

*Plus two babies/toddlers – baby cots available.



FLOOR PLANS



Please note: the first floor dressing room, second floor study and garage are not included in the rental of the house.