



LIST OF BEDROOMS & FLOOR PLANS AT KINGSWELL HOUSE

BEDROOMS – sleeps 12 (+2) in 6 bedrooms

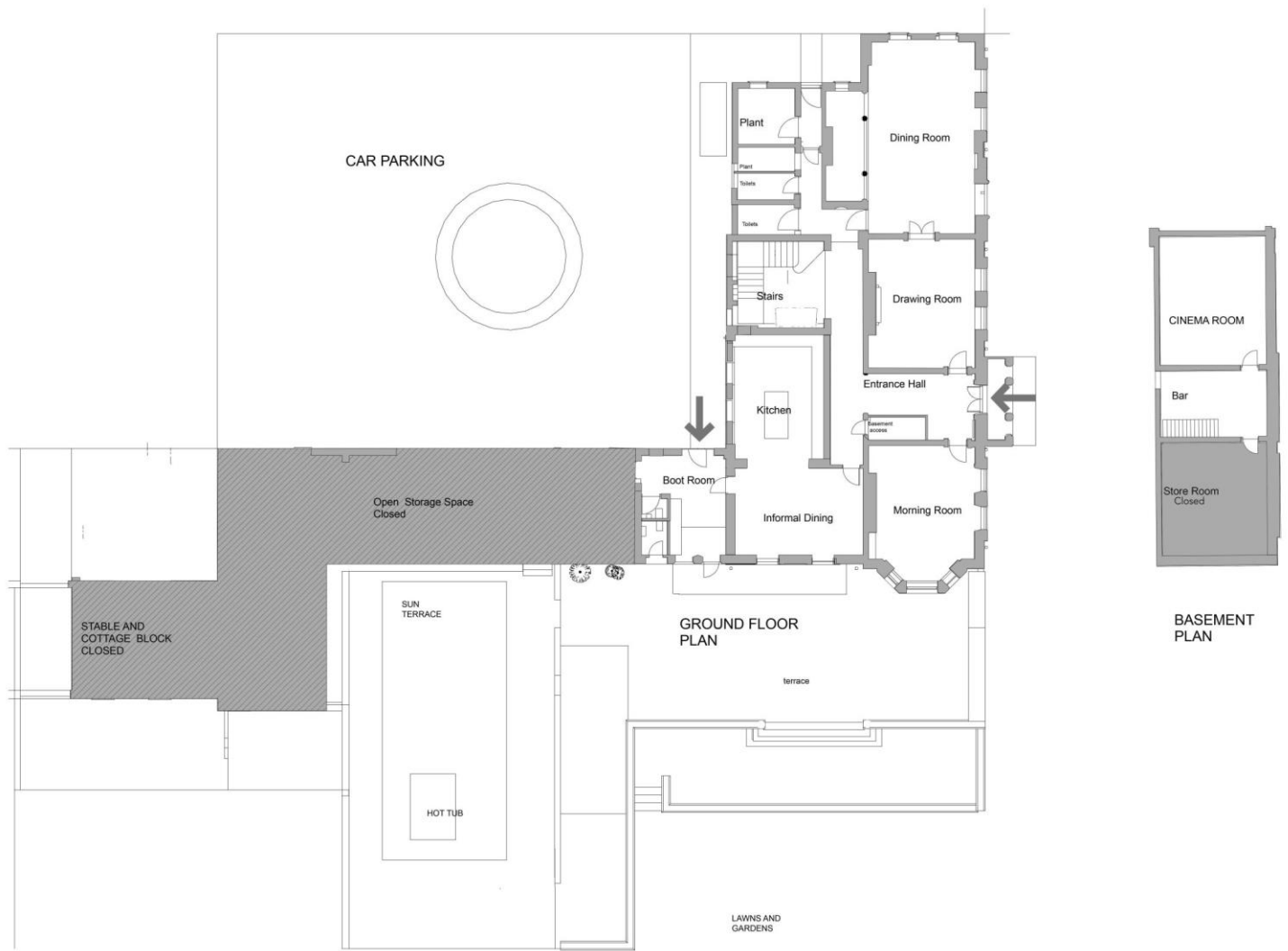
● indicates a choice of bed configuration.

Bedroom	Beds	Sleeps	Features
Rose (First floor)	Super king size bed	2	En-suite bathroom with walk-in shower with tub.
Magnolia* (First floor)	King size bed (can be divided into two single beds) ●	2	En-suite bathroom with walk-in shower.
Camelia (First floor)	Super king size bed (can be divided into two single beds) ●	2	En-suite bathroom with walk-in shower.
Hydrangea* (First floor)	King size bed (can be divided into two single beds) ●	2	En-suite bathroom with walk-in shower.
Peony (First floor)	Super king size bed	2	En-suite bathroom with walk-in shower.
Dahlia (First floor)	Super king size bed (can be divided into two single beds) ● Plus sofa bed, only suitable for children.	2-4	En-suite bathroom with walk-in shower.
Total		12 (+2)	

*Please note: Magnolia & Hydrangea can be made up as twin beds; but when divided the beds are smaller than a typical single bed, so we would suggest that they're only used for children under 12.



FLOOR PLAN – GROUND FLOOR



FLOOR PLAN – FIRST FLOOR

