



LIST OF BEDROOMS & FLOOR PLANS AT RIPPON HALL, NORFOLK

Each of the bedrooms at Rippon Hall have been beautifully and individually designed. Below you'll find a list of each bedroom as well as floor plans.

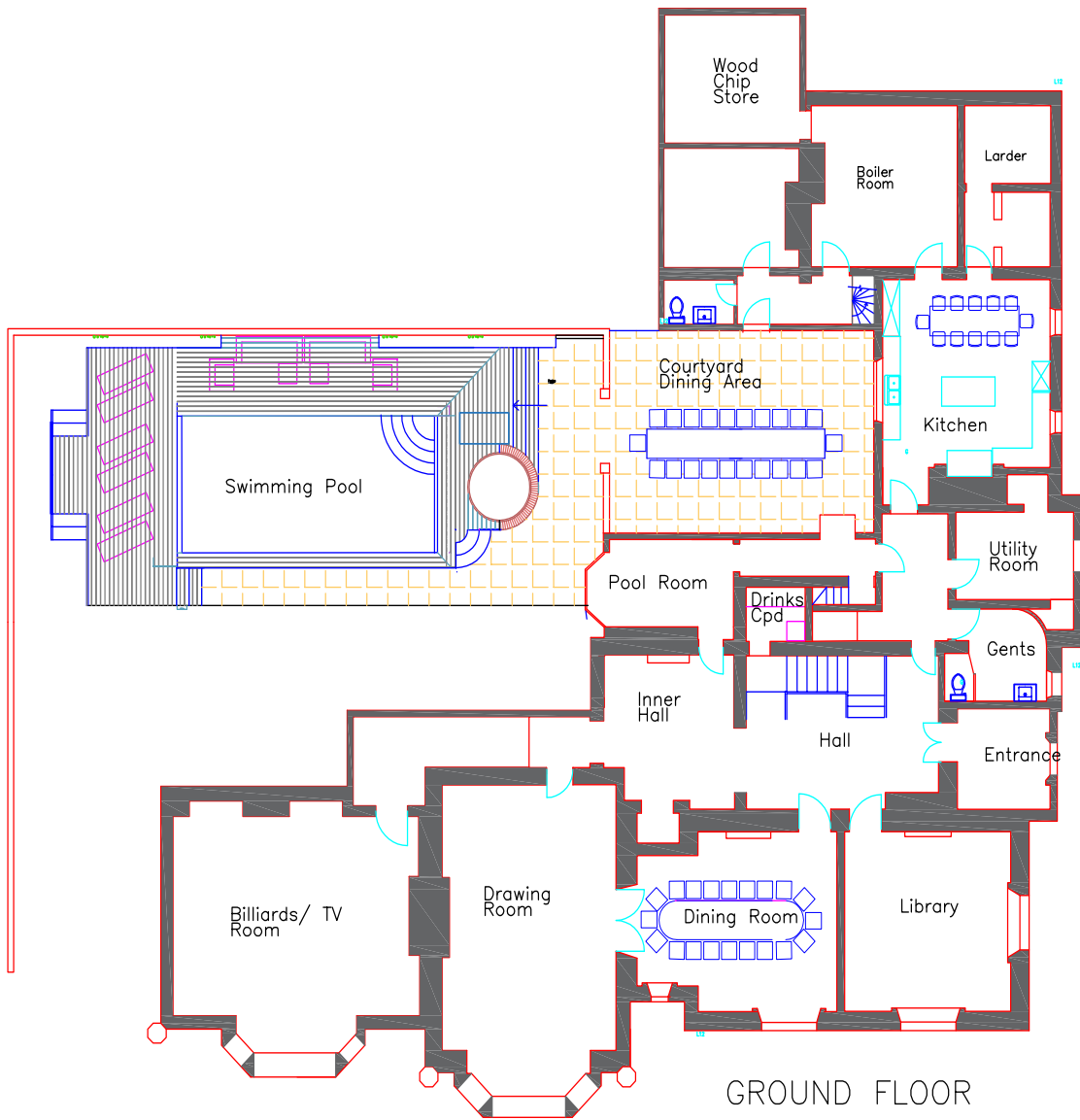
BEDROOMS – sleeps 20-22 in 10 bedrooms

Bedroom	Beds	Sleeps	Features
Bee Eater	Four poster super king size bed	2	Steps into bedroom and steps into bathroom. Freestanding bathtub and large separate shower.
Woodpecker	Super king size bed (can be divided into two single beds)	2	Steps into bedroom. Sitting area with ornate fireplace. Large bathroom with traditional bath.
Goldfinch	Super king sleigh bed	2	Steps into bedroom. Bathroom with copper slipper bath, marble walk-in shower.
Kingfisher	Antique embroidered king size bed	2	Open fireplace. Own shower room with large drench shower (not ensuite).
Robin	Two antique French single beds	2	Large ensuite bathroom with double ended freestanding bath and walk-in shower.
Turtle Dove	Super king size bed (can be divided into two single beds)	2	Ensuite bathroom with bathtub and shower over bath.
Rosella	Super king size bed (can be divided into two single beds)	2	Own bathroom (not ensuite) with double ended bath and walk-in shower.
Siskin	Super king size bed (can be divided into two single beds), plus double sofa bed	4	Large bathroom with painted slipper bath and huge walk-in shower.
Little Owl	5' bed with iron bedstead	2	Attic room with own bathroom with shower over bathtub.
Barn Owl	Two 4-foot single beds	2	Attic room with ensuite bathroom with shower over bathtub.
Total		20-22	

Please note there are two z-beds available for an additional cost of £60 per z-bed. The maximum capacity of the house is still 22 guests.



FLOOR PLAN – Ground Floor



FLOOR PLAN – First Floor

