



BEDROOMS AT HIGH PEAK MANOR

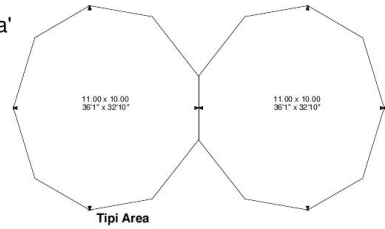
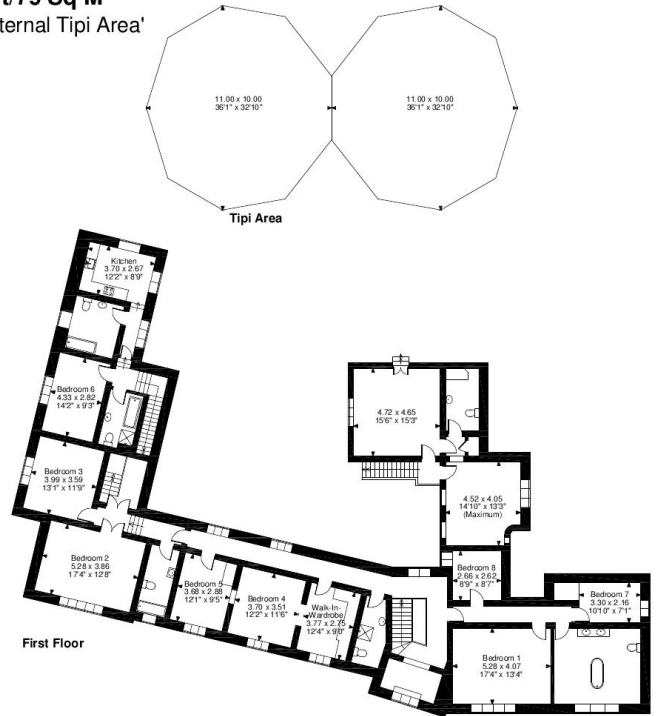
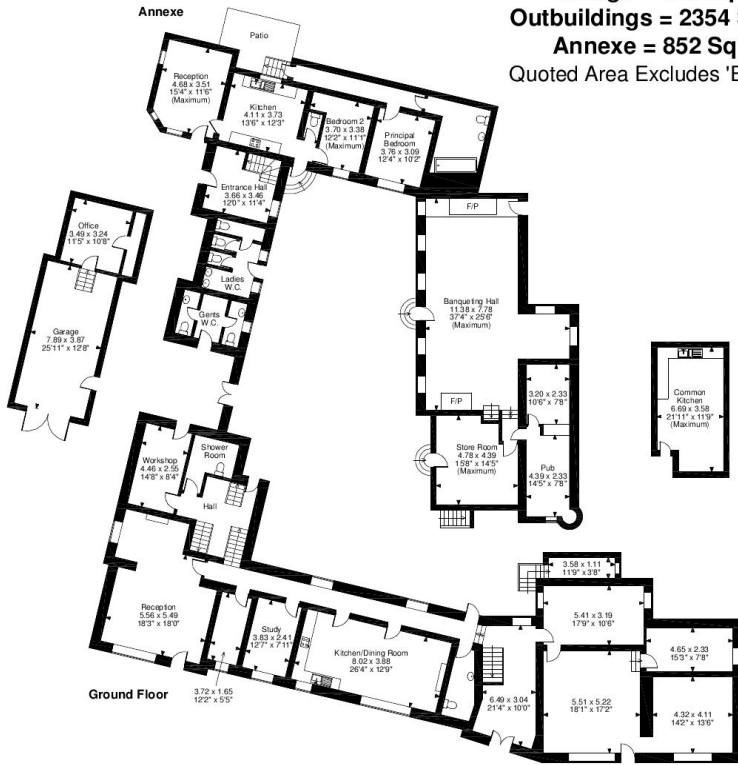
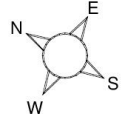
The bedrooms at High Peak Manor are as luxurious as they are cosy and welcoming. There are 10 bedrooms in total, with further accommodation available in the village (a short drive away).

BEDROOMS – sleeps 23 in 10 bedrooms

Bedroom Name or Number	Beds	Sleeps	Features
1. Sunrise Room	Single bed	1	A single room on the first floor.
2. Rosalind's Room	1 x double 2 x singles	4	A large double bedroom on the first floor ideal for a family or sharers. Views over the gardens and Kinder Reservoir.
3. Agatha's Room	1 x double 1 x sofa bed (the double can be 2 singles)	2-3	Where Agatha Christie would sleep in this room and would dream up new mysteries for Miss Marple to investigate, the character she created in the Peak District. Overlooks the courtyard.
4. James' Room	1 x super king	2	With a huge antique double bed, a love seat and wonderful view of Kinder Water.
5. Watts Chamber	1 x double (can be 2 singles)	2	With an adjoining door to James' room if a family are there, lovely views.
6. The Reservoir Room	1 x double	2	With a four-poster bed, vaulted ceilings and the most perfect view of Kinder Water.
7. Poirot's Perch	1 x double (can be 2 singles)	2	With a mezzanine floor and a cosy feel.
8. William's Clough	1 x double (can be 2 singles)	2	Views of Kinder.
9. Trackers Rest (Gamekeeper's Lodge)	1 x double (can be 2 singles)	2	Warm and cosy in the Gamekeeper's Lodge.
10. Cook's Room	1 x double	2	
Total		22/23	



Approximate Gross Internal Area
Main House = 5375 Sq Ft/499 Sq M
Garage = 484 Sq Ft/45 Sq M
Outbuildings = 2354 Sq Ft/219 Sq M
Annexe = 852 Sq Ft/79 Sq M
 Quoted Area Excludes 'External Tipi Area'



FOR ILLUSTRATIVE PURPOSES ONLY - NOT TO SCALE
 The position & size of doors, windows, appliances and other features are approximate only.



BIG HOUSE EXPERIENCE